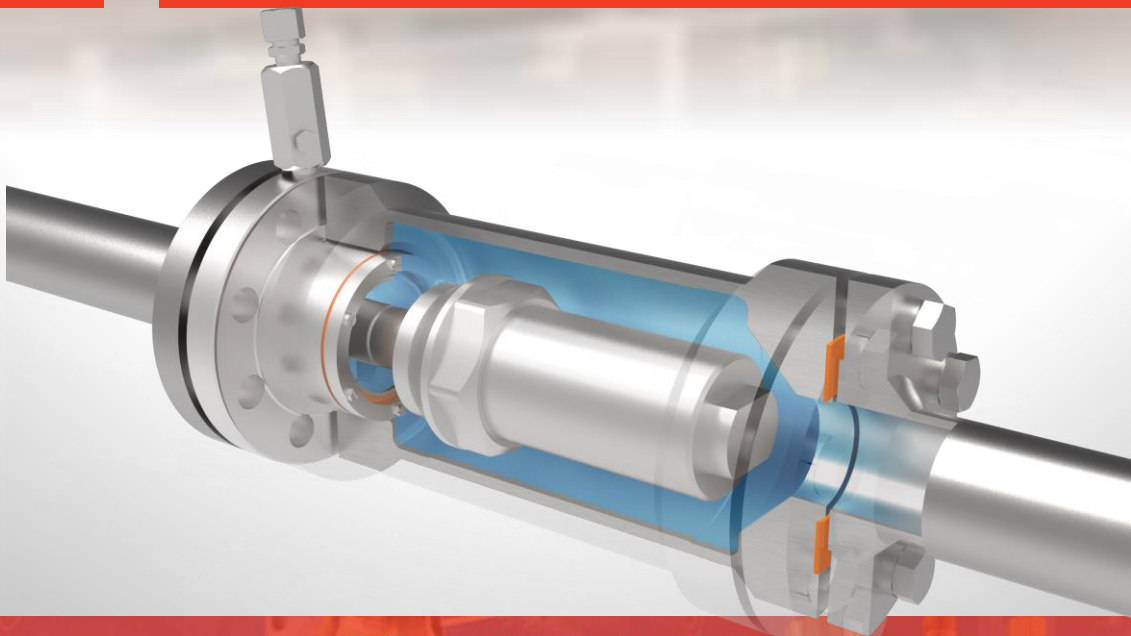




**H**

**06060 HYDRAULIC VALVES  
LINE HOUSING**



**Flüssiggas-Anlagen GmbH**

Peiner Straße 217  
38229 Salzgitter - Germany

[www.fas-engineering.de](http://www.fas-engineering.de)  
[www.fas.de](http://www.fas.de)

Phone: +49 5341 8697-0  
E-Mail: [info@fas.de](mailto:info@fas.de)

### DESCRIPTION :

The 06060 line housing has been specially designed to fit the Whessoe range of hydraulic & pneumatic operated safety valves when they can't be installed directly on LPG vessel or when safety valves are required on section of pipe work.

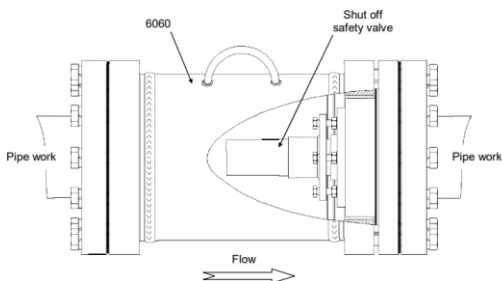
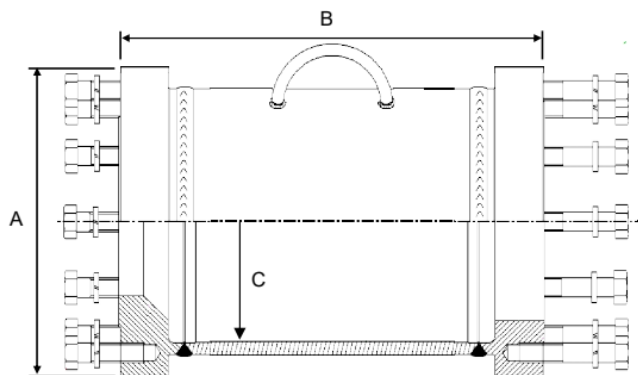
### TECHNICAL DATA :

Line housings are available for installation of ESV in pipe lines or manifolds.

- Designed according to ASME VIII Div 1.
- Service temperature range: -40°C to +85°C.
- Maximum service pressure: up to 20 bar.
- Standard connection flange 300 lbs according to ANSI B16.5.
- Product Range: LPG – BUTANE- PROPANE

### MATERIAL :

- Cylinder ASTM A333 GR6.
- Flange ASTM A350 LF2.
- Bolts Zinc plated steel A193B7
- Flange ANSI 300# RF rating



Size	Dimensions / mm			Weight / Kg
	A	B	C	
2"	165	305	Ø 122	20 Kg
3"	210	305	Ø 146	31 Kg
4"	254	397	Ø 194	50 Kg
6"	317	438	Ø 255	74 Kg
8"	381	470	Ø 336	103 Kg
10"	444	470	Ø 387	127 Kg
12"	521	724	Ø 483	250 Kg
14"	584	724	Ø 534	270 Kg