



LIQUID CONTROLS

MASTERLOAD® Series

THE NEXT GENERATION ELECTRONIC REGISTER



MASTERLOAD.iQ™

Zone 2 & Div. 2 Rated



MASTERLOADx.iQ™

Zone 1 Rated

PART OF
CENTRILOGIO®

Ease of Use

Built from the ground up by Liquid Controls' Research & Development team with close collaboration with customers who benefit from it, fueler safety, ease of use, and data management are the highest priorities in the design of the **MASTERLOAD.iQ®**.

HIGH-RESOLUTION DISPLAY WITH DAY/NIGHT MODES

7" ultra bright video display designed for extreme climates and rigorous fueling environments.

LARGE SCALABLE DIGITS FOR EASY VIEWING

Large digits provide easy viewing, day or night, up to 100 feet (30 m) away.

CONFIGURABLE FUELING DATA

The **MASTERLOAD.iQ®** allows users complete control over the fueling data fields displayed on the detailed delivery screen.

SMART KEYS FOR GUIDED OPERATION

Smart keys guide the operator through the next available steps in the operation to minimize risk of error.

LARGE KEYS FOR EASY OPERATION

Large, petroleum and UV resistant elastomeric keys provide confident feel and consistent operation.

CONFIGURABLE SCREEN DETAILS

Easily configure the idle and active fueling screens the operator sees before, during, and after fueling. Features like **tank level gauge**, **flow rate**, **totalizers**, and any other field the register measures can be displayed on the main screen.



PANEL MOUNT ENCLOSURE OPTION

New panel mount design allows convenient remote mounting, providing OEMs greater design flexibility.

ACTIVE FUELING FULL SCREEN DETAIL MODE

Yellow background indicates active fueling mode to improving safety and fueling status awareness of operators,

MULTI-LANGUAGE FUNCTIONALITY

Operator level languages include: English, Spanish, German, French, Portuguese, Chinese, Korean

Configurability

It's just that simple.

LC engineers designed the **MASTERLOAD.iQ®** from the **user's perspective**. The result is a user-guided, configurable interface that walks the operator through the complete fueling operation, **minimizing chance for error**.

COMMON FUELING PROCESSES COMPLETED IN 3 STEPS OR LESS!



SMART CONFIGURATIONS

Guide the operator through the fueling process of your choosing.

From basic pump and print to presets by volume, price, or even product weight*, the operator can be automatically guided through a series of questions prior to starting the delivery.

OPERATOR FRIENDLY SCREENS WITH DAY / NIGHT MODES AND BRIGHTNESS CONTROL

MASTERLOAD.iQ® screens adapt to the operator. Full, active fueling screen with yellow background when "Start" is pressed with day/night mode and brightness control options.



Day mode idle screen

Night mode idle screen

Active fueling mode full screen

Active night mode detail screen

MASTERLOAD.iQ® User Configuration and Setup Features

User Configuration Features

- Configurable idle screen** - Design the fueling screen the way you want it.
- Configurable fuel delivery process** - Step by step on-screen instructions guide the operator through the fueling process you specify.
- Configurable Languages** - English, Spanish, French, German, Portuguese, Chinese, Korean
- Configurable date, time, and units of measure formats** - Set local units of measure and date/time formats to eliminate unit conversions
- Configurable product types** - Configure product types and terms based on local terminology
- Configurable flow rate min/max thresholds** - Set alerts to notify user if flow rates exceed thresholds
- Configurable I/O settings** - Define what each input and output is assigned to and how they are utilized
- Configurable tickets and printer settings** - Easily tailor ticket header text, fields, and printer type
- Configurable product pricing and taxes** - Either fixed or user definable pricing and taxes at the delivery level
- Configurable data logging and retention period** - Define how long to retain fueling transactional data on-board the **MASTERLOAD.iQ®**
- Configurable electronic temperature volume compensation** - Available with optional temperature probe and thermowell kit

Setup, Calibration and Security

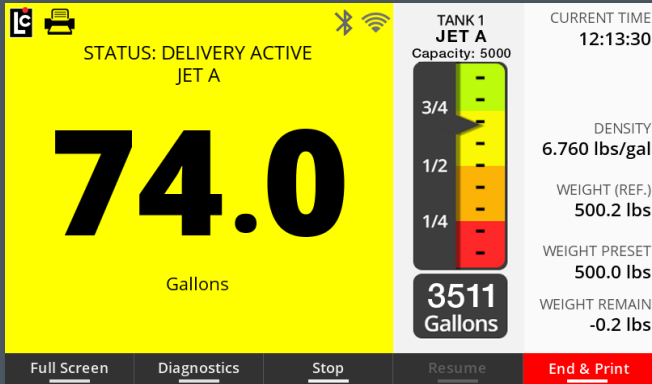
- iQ settings and preferences transferable to multiple registers** - Set up once, then backup and install configuration across multiple units
- Intuitive Calibration** - Easy to follow meter calibration and linearization process.

*Preset fueling by weight is patent pending intellectual property of Liquid Controls LLC

New Features

MEASURED AND MANUAL TANK INVENTORY

The MASTERLOAD.iQ provides highly accurate tank level measurement and inventory management for up to 12 tanks and products. Each tank can be configured according to product type, tank size, or measurement method to be used (either automatic or manual level control).



TANKiQ™ (patent pending)

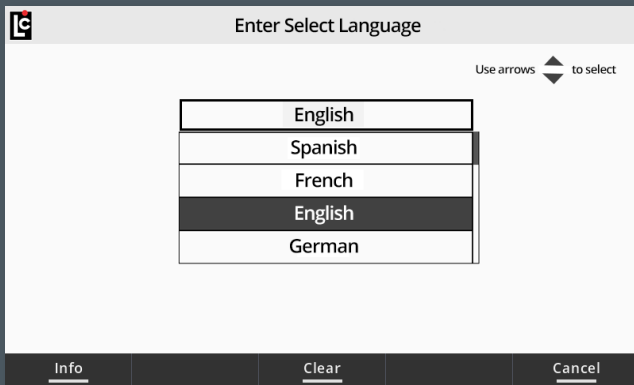
Auto-Calibrate Your Tank Inventory

The MASTERLOAD.iQ offers the first ever continuously calibrated tank profile that does not require tank strapping charts.

- When using an approved tank level gauge with 4-20 mA output, it auto-generates a precise tank strapping profile.
- Delivers highly accurate measured tank inventory and controls without the need of middleware or third party control or display devices.

MULTIPLE LANGUAGE SUPPORT

The MASTERLOAD.iQ provides embedded language files to support operator level language translations easily selectable from the settings menu.



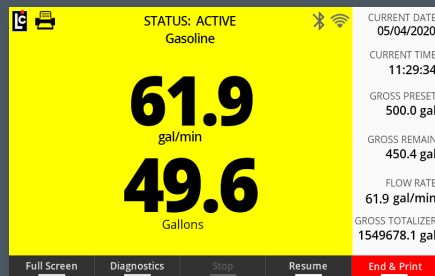
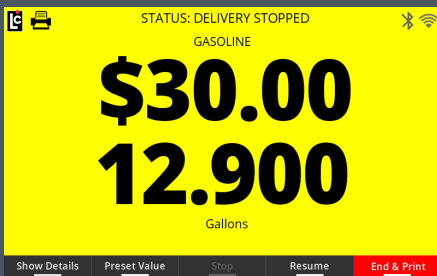
Change the Language for Operators

MASTERLOAD.iQ® fully supports multiple languages on operator level screens for increased safety and efficiency in fueling.

- English
- Spanish
- French
- German
- Portuguese
- Chinese
- Korean

CONFIGURABLE LARGE DIGIT DISPLAY

The MASTERLOAD.iQ now allows users to configure the large digit data displayed to include total retail sale and volume measured to the 1/1000th decimal place or flow rate and volume when real-time rate of fuel delivery monitoring is required.



Configure Your Display

Certain retail fueling applications require total sale and volume to the 1/1000th place or real-time flow rates on the primary fueling screen.

New Features

EXPANDABLE INPUTS & OUTPUTS

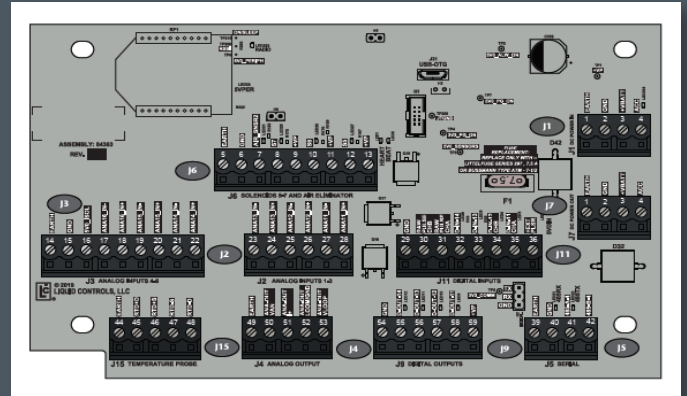
The SENSEiQ expansion board is available for applications with more demanding sensing and control options such as multiple measured tank levels, water detection, remote controls, external display devices, etc.

SENSEiQ™

Expand Your Inputs and Outputs

Provides end users the capability to connect and control a multitude of external devices in applications where additional inputs or outputs are required.

- 6 Analog inputs: Multiple Tank level sensors, H2O sensor
- 4 Digital inputs: remote start / stop / print. Pulse inputs
- 4 Digital outputs: Large digit external displays, calibrated pulse output, alarms, deadman control alarms.



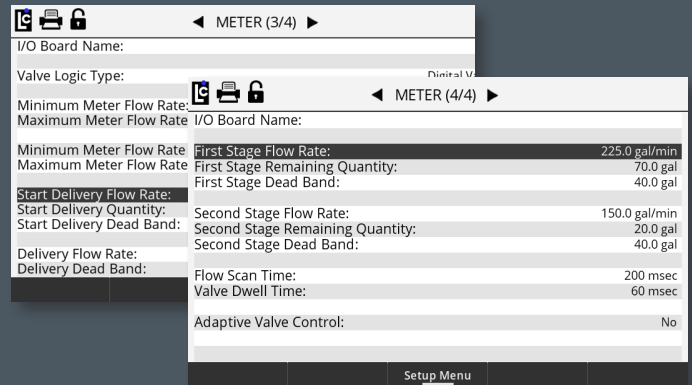
DIGITAL VALVE CONTROL

The MASTERLOAD.iQ provides configurable digital valve control to gain higher levels of control over delivery flow rates than conventional registers that are limited to utilizing simple 2-stage block valves for flow control.

Gain Flow Control Over Your Deliveries

Gain full control over your fueling application with multi-stage variable control and ramp up and ramp down of flow rates during deliveries.

- Ideal for applications where precise flow-rate control is critical for both safety and fueling accuracy.
- Utilize the same fueling equipment in both high and



WATER DETECTION AND SAFETY CONTROLS (Aviation)

When configured with an approved water sensor, MASTERLOAD.iQ provides boundary controls and safety shut down according to Joint Inspection Group (JIG) and Airlines for America standards.



Wireless & Data Connectivity

BLUETOOTH

- **Wireless printing** with compatible Bluetooth enabled printers
- Wireless control and data transfer via FUELiQ app or SDK

Wi-Fi

- Wireless control and data transfer via FUELiQ app or SDK
- Transaction details accessible using FTP

ETHERNET

- Fueling control and data transfer via LCP protocol
- Transaction details accessible using FTP



SERIAL CONNECTION

- Fueling control and data transfer via LCP protocol
- Ticket printing

FUELiQ™ Android App

Liquid Controls' new FUELiQ application provides a wireless pathway for fuelers and third-party data providers to gain read-write access to pre-settable data fields on the MASTERLOAD.iQ for operational mobility, efficiency, and transactional data. *[currently in limited beta testing]*



Technical Features and Benefits

LCR.iQ® Features			
User Input & Display Features			
Large 7" high definition, full color video display - High clarity and easy visibility			
Customizable home screen and delivery setup prompts - Streamline driver interface			
Full alpha-numeric keypad and arrow selection keys - Quick, intuitive navigation			
Instant on-board diagnostics and help screens - Quickly troubleshoot & resolve issues to minimize downtime			
Full screen active delivery mode - Largest readable digits in the industry, viewable from up to 100'			
Day/night mode and brightness adjustment - Operator can select preferred viewing mode for conditions			
Customizable printed tickets - Easily tailor ticket formats without software updates			
Transaction history logs store 365+ days of data - No more lost tickets; Easily access and print historical tickets			
Weights & measures historical audit log and event log - Search and download by date range or field			
Large LED back lit keypad - Easy to operate with gloved hands, easy to read in daylight or at night			
Control Features			
Remote control (E-Stop) compatible to third party systems - Seamless retrofit into existing systems			
3rd party fleet automation connectivity and data management - Seamless retrofit into existing systems			
Toggle flow - Optimizes fuel flow rate without driver intervention in refined fuels delivery systems			
Wireless Printing - Operator can print from hand-held remote printer			
General			
Standard meter mount base - Drop-in retrofit for all conventionally mounted registers			
Panel mount enclosure option - For remote panel mounting of LCR.iQ®			
Preset delivery by volume or weight - Provides highest accuracy of fuel delivery to prevent over-fueling			
4-Bolt even seal o-ring design - Water-tight, weather-proof seal protects internal components			
Die-cast aluminum housing - Chromate and powder coated for long term corrosion resistance.			
11 Conduit Ports (1/2" NPT) - To accommodate many I/O and control options			
Multi-point calibration up to 16 points - Maximize accuracy over entire flow range			
Internal telescoping hinges - Eliminates seizing and corrosion of external door hinges			
Serial accessibility to LCP data communication protocol - Compatible with major in-cab/back office systems			
Electronic temperature volume compensation - Available with optional probe and thermowell kit			
LCR.iQ® Specifications			
Enclosure			
Waterproof, corrosion resistant and dust-proof - meets IP66 and UL Type 4X requirements			
Display			
7 inch, 800 x 480 high-resolution, Full Color			
Temperature Range		Input Voltage	
-40°F (-40°C) to 140°F (60°C)		9-28 VDC	
Keypad			
LED Back-lit		Petroleum-resistant	
Non-conductive, UV resistant elastomer		Field Replaceable	
Communication		I/O	
RS232/485 Comm Ports	2	Solenoid Outputs (high current)	4
RS485 Dedicated Comm Ports	2	Programmable Digital Outputs	6
WiFi	Internal antenna	Digital Inputs	6
Bluetooth	Internal antenna	RTD Probe Input	1
Extended range antenna (externally mounted)	Optional accessory	Optical Sensor Input	1
4-20 mA inputs / outputs	1 input standard + 6 inputs / 1 output expandable	Scalable Pulse Output (Additive inj, display, PLC)	1
Processor & Storage			
Dual-Core Processor Speed		800 MHz	
Internal RAM		1GB	

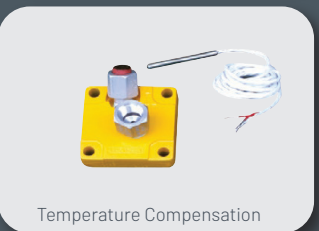
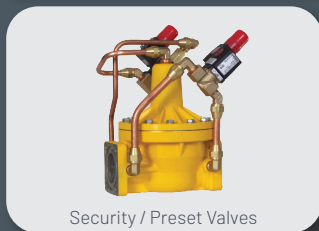
Inspired through LC's PartnerConnect™ initiative, Liquid Controls' new **CENTRILOGIQ®** platform provides adaptive sensing and communication that is scalable to adapt to future decades of new technology.

LPG & Refined Fuels

MASTERLOAD.iQ® simplifies fueling operations with process configurability, intuitive operation, real-time fueling diagnostics and data connectivity to maximize up-time and daily throughput.

Aviation Fueling

MASTERLOAD.iQ® provides an easy to use, operator interface and integrates critical sensing devices in aviation fueling systems, improving safety and efficiency while safeguarding all fueling system data.



MASTERLOAD.iQ®
with LC M40, dP, and Slipstream Densitometer

